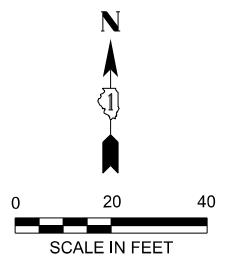
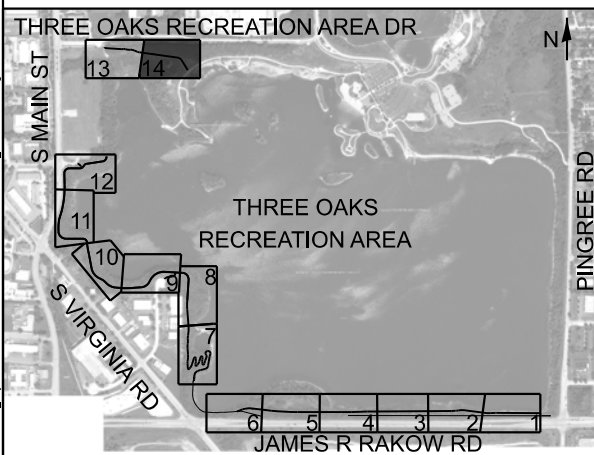


THREE OAKS RECREATION AREA DRIVE



KEY MAP



LEGEND
 ■ PROPOSED RIPRAP

**CITY OF CRYSTAL LAKE
 THREE OAKS RECREATION AREA**

**PLAN
 TRAIL SEGMENT 7**

SCALE: 1"=20' SHEET 15 OF 15 SHEETS STA. 704+00 TO STA. 709+00

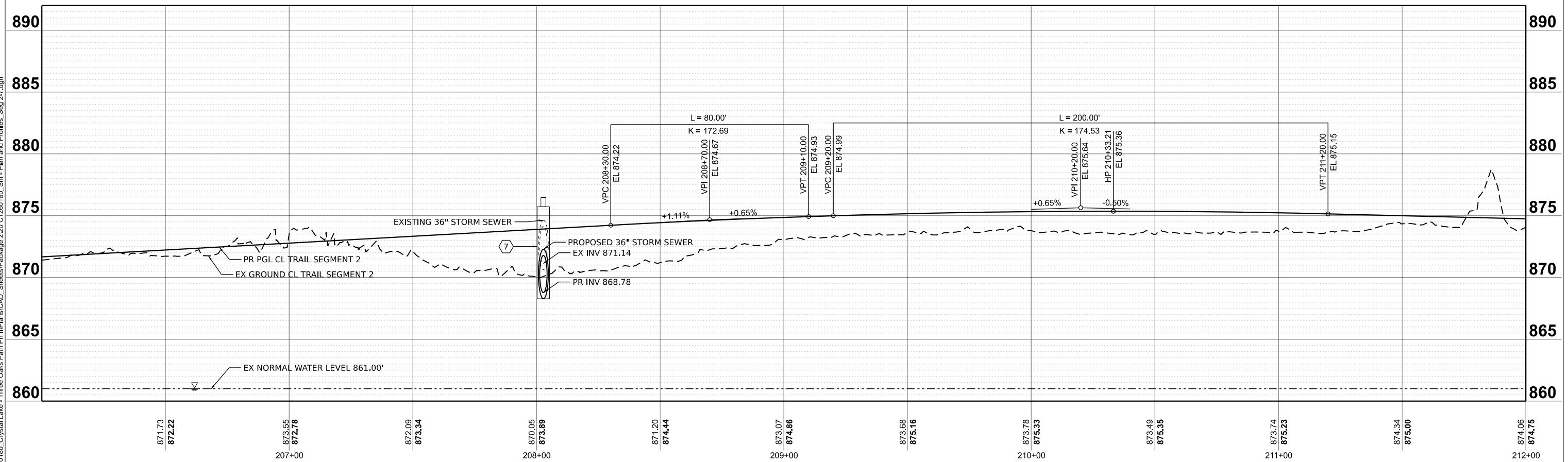
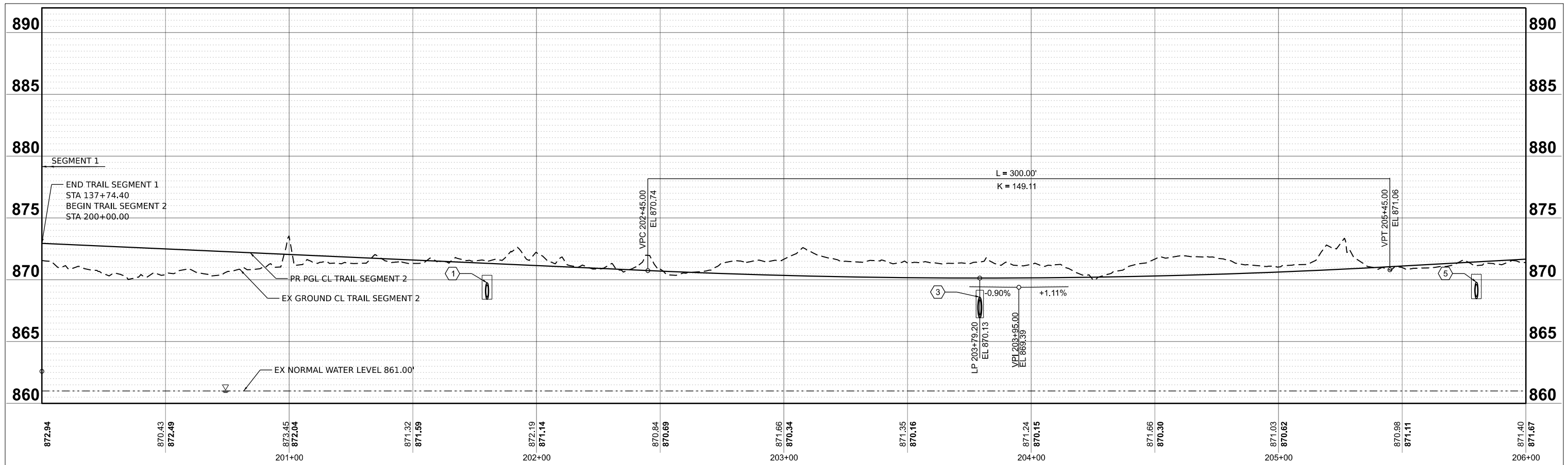
USER NAME	= AAcevedo
PLOT SCALE	= \$SCALE\$
PLOT DATE	= 3/3/2025

DESIGNED	-	REVISED	-
DRAWN	-	REVISED	-
CHECKED	-	REVISED	-
DATE	-	REVISED	-

F.A. RTE.	SECTION	COUNTY	TOTAL SHEETS	SHEET NO.
		MCHENRY	97	26
CONTRACT NO.				
ILLINOIS FED. AID PROJECT				

MODEL: Trail Seg 03-2 Sheet 14
 FILE NAME: P:\C1260180-Crystal Lake - Three Oaks Path\H\H\H\CAD_Sheets\Package 2300 C1260180_Sht-15.dwg and Profiles_Seg 3-2.dwg

MODEL: Seg02 - Profile 01 (Sheet)
 FILE NAME: P:\C1260180_Crystal Lake - Three Oaks Path Ph III\Plans\CAD_Sheets\Package 2\20 C1260180_Sht - Plan and Profiles_Seg 2-7.dgn



USER NAME = AAcavedo	DESIGNED -	REVISED -
	DRAWN -	REVISED -
	CHECKED -	REVISED -
PLOT DATE = 3/3/2025	DATE -	REVISED -

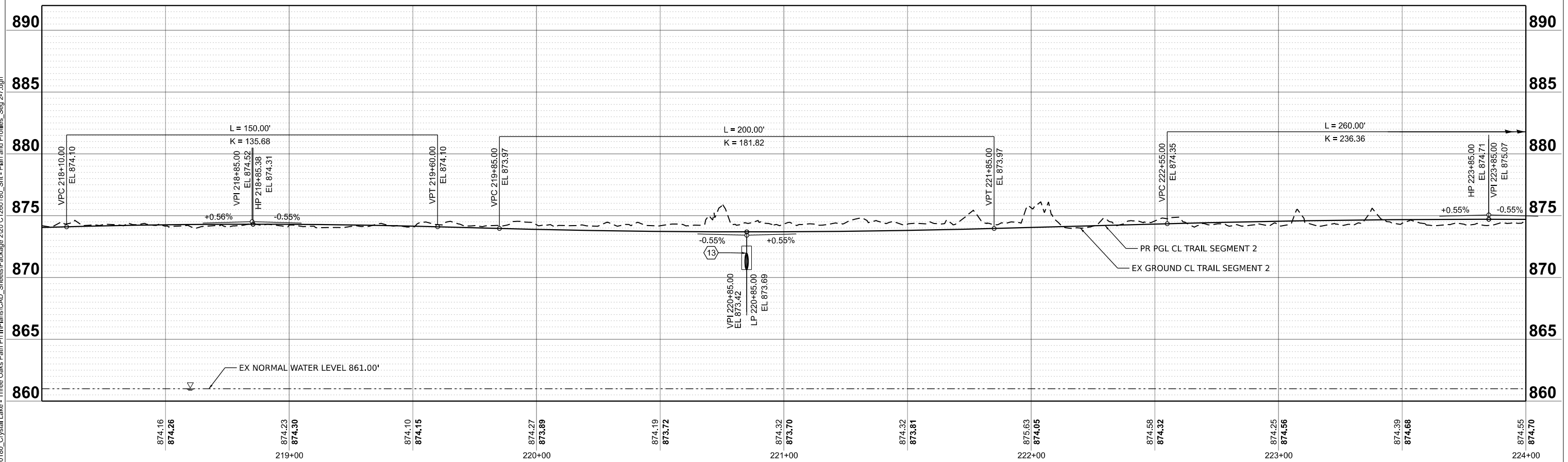
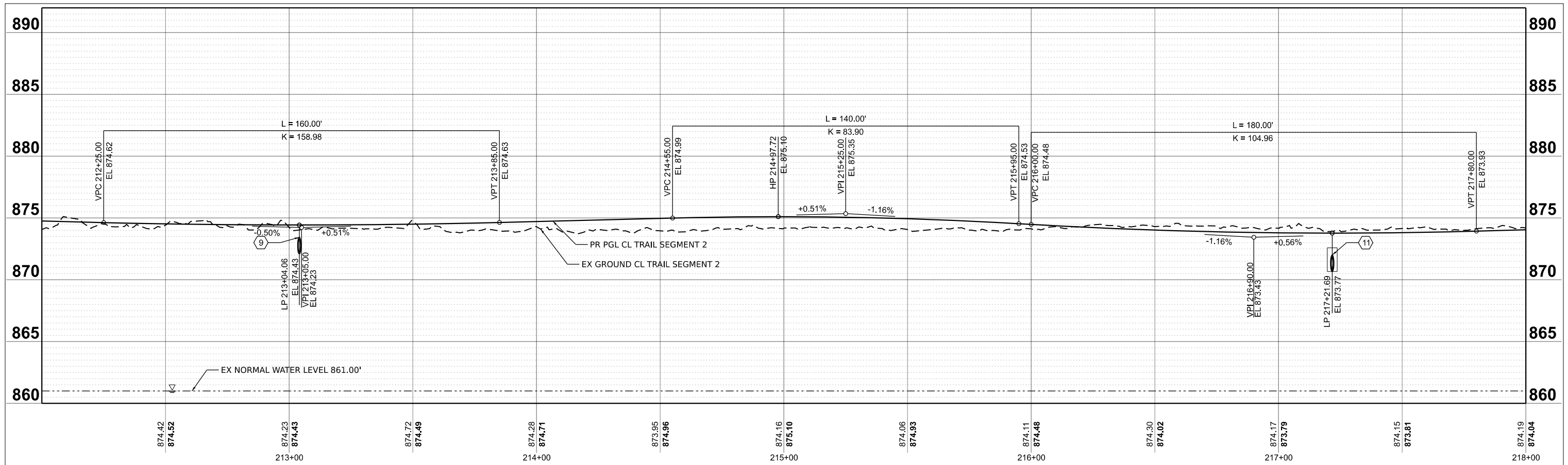
**CITY OF CRYSTAL LAKE
 THREE OAKS RECREATION AREA**

**PROFILE
 TRAIL SEGMENT 2**

SCALE: 1"=20' SHEET 1 OF 3 SHEETS STA. 200+00.00 TO STA. 212+00.00

F.A. RTE.	SECTION	COUNTY	TOTAL SHEETS	SHEET NO.
		MCHENRY	97	27
CONTRACT NO.				
ILLINOIS FED. AID PROJECT				

MODEL: Seg02 - Profile 03 (Sheet)
 FILE NAME: P:\C1260180_Crystal Lake - Three Oaks Path Ph III\Plans\CAD_Sheets\Package 2\20260180_Sht - Plan and Profiles_Seg 2-7.dgn



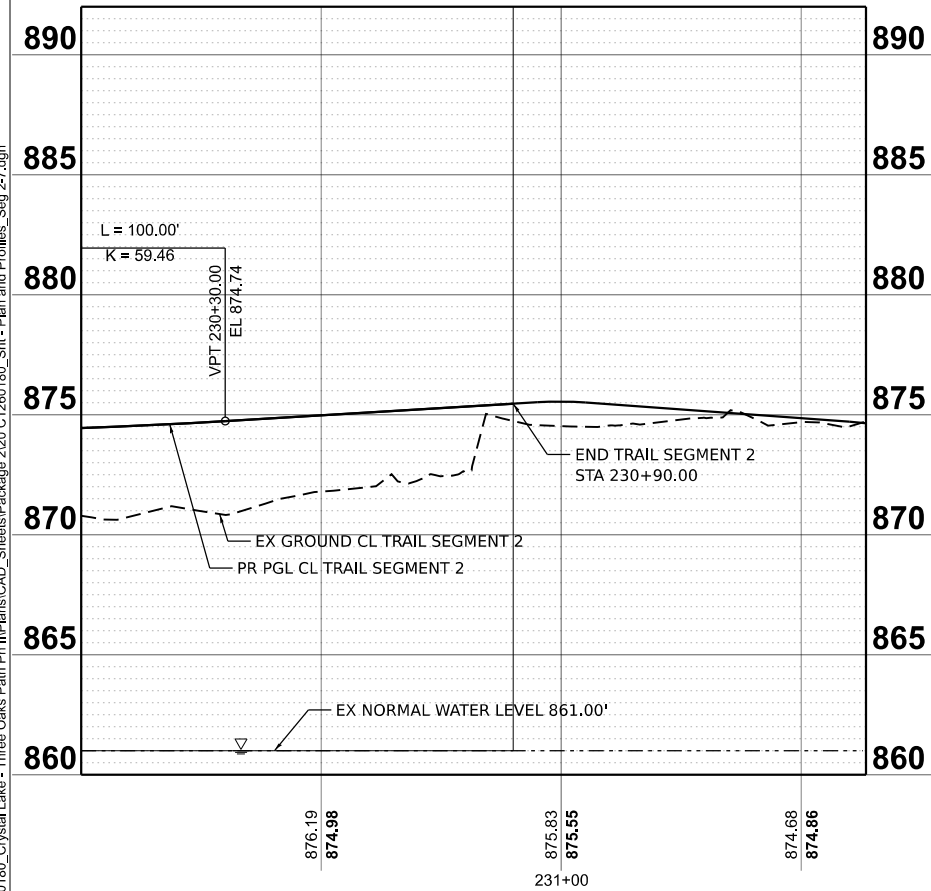
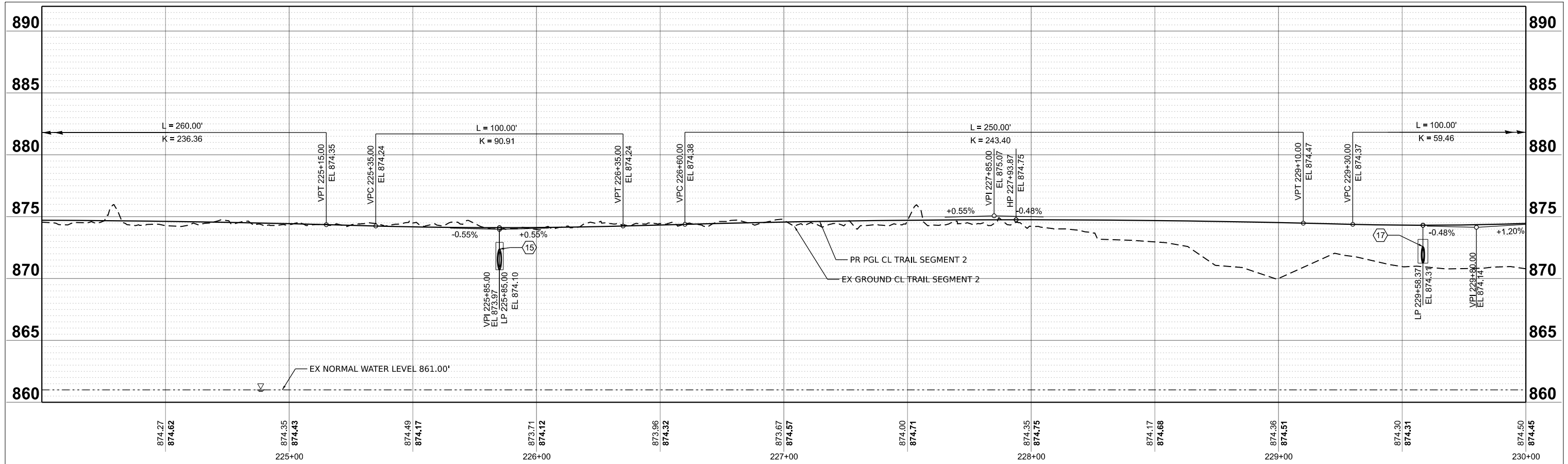
USER NAME = AAcavedo	DESIGNED -	REVISED -
	DRAWN -	REVISED -
	CHECKED -	REVISED -
PLOT DATE = 3/3/2025	DATE -	REVISED -

**CITY OF CRYSTAL LAKE
 THREE OAKS RECREATION AREA**

**PROFILE
 TRAIL SEGMENT 2**

SCALE: 1"=20' SHEET 2 OF 3 SHEETS STA. 212+00.00 TO STA. 224+00.00

F.A. RTE.	SECTION	COUNTY	TOTAL SHEETS	SHEET NO.
		MCHENRY	97	28
CONTRACT NO.				
ILLINOIS FED. AID PROJECT				



MODEL: Seg02 - Profile 05 (Sheet)
 FILE NAME: P:\C1260180_Crystal Lake - Three Oaks Path Ph III\Plans\CAD_Sheets\Package 2\20 C1260180_Sht - Plan and Profiles_Seg 2-7.dgn

USER NAME = AAcavedo	DESIGNED -	REVISED -
	DRAWN -	REVISED -
	CHECKED -	REVISED -
PLOT DATE = 3/3/2025	DATE -	REVISED -

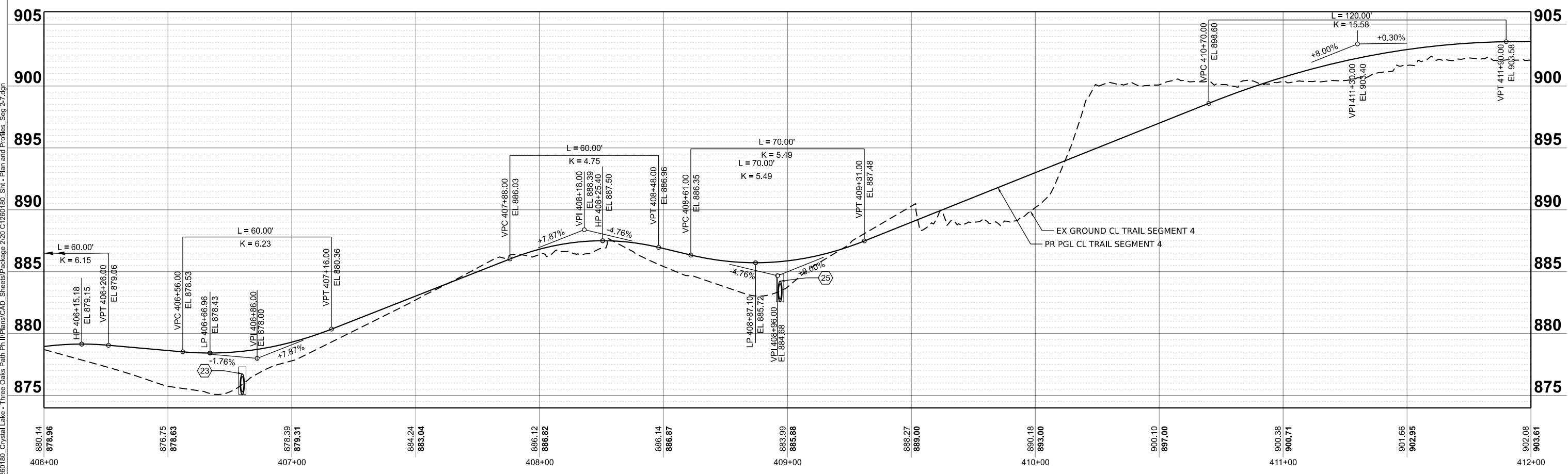
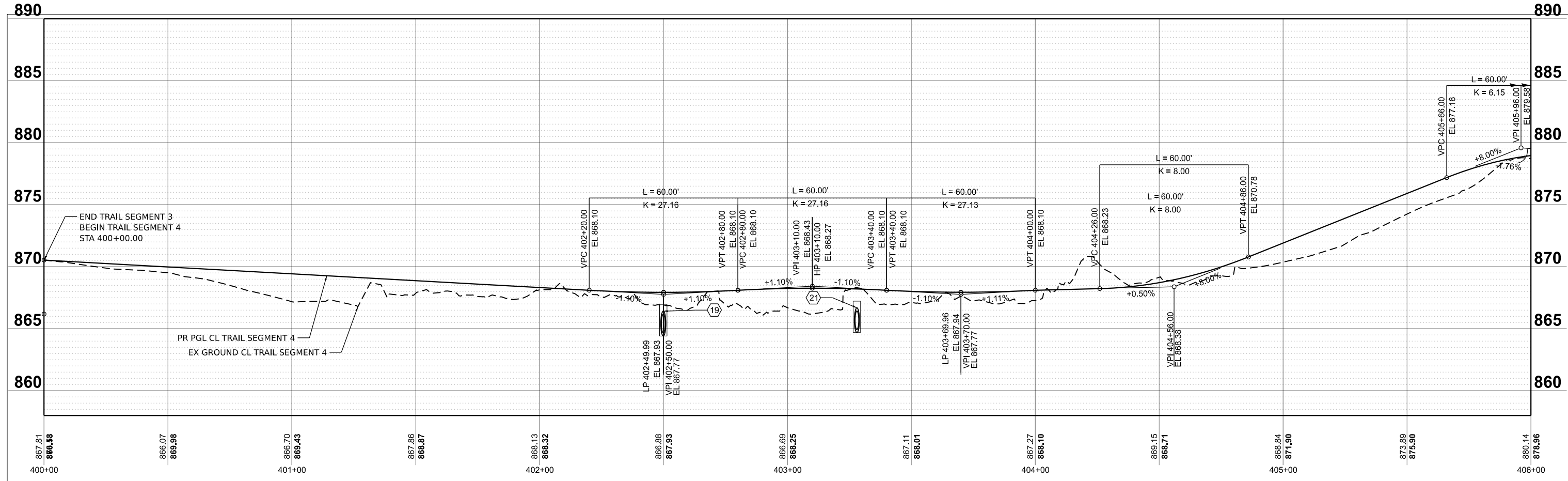
**CITY OF CRYSTAL LAKE
 THREE OAKS RECREATION AREA**

**PROFILE
 TRAIL SEGMENT 2**

SCALE: 1"=20' SHEET 3 OF 3 SHEETS STA. 224+00.00 TO STA. 230+90.00

F.A. RTE.	SECTION	COUNTY	TOTAL SHEETS	SHEET NO.
		MCHENRY	97	29
CONTRACT NO.				
ILLINOIS FED. AID PROJECT				

MODEL: Seg04 - Profile 01 (Sheet)
 FILE NAME: P:\C1260180_Crystal Lake - Three Oaks Path Ph III\Plans\CAD_Sheets\Package 2\20 C1260180_Sht - Plan and Profiles_Seg 2-7.dgn



USER NAME = AAcevedo	DESIGNED -	REVISED -
	DRAWN -	REVISED -
	CHECKED -	REVISED -
PLOT DATE = 3/3/2025	DATE -	REVISED -

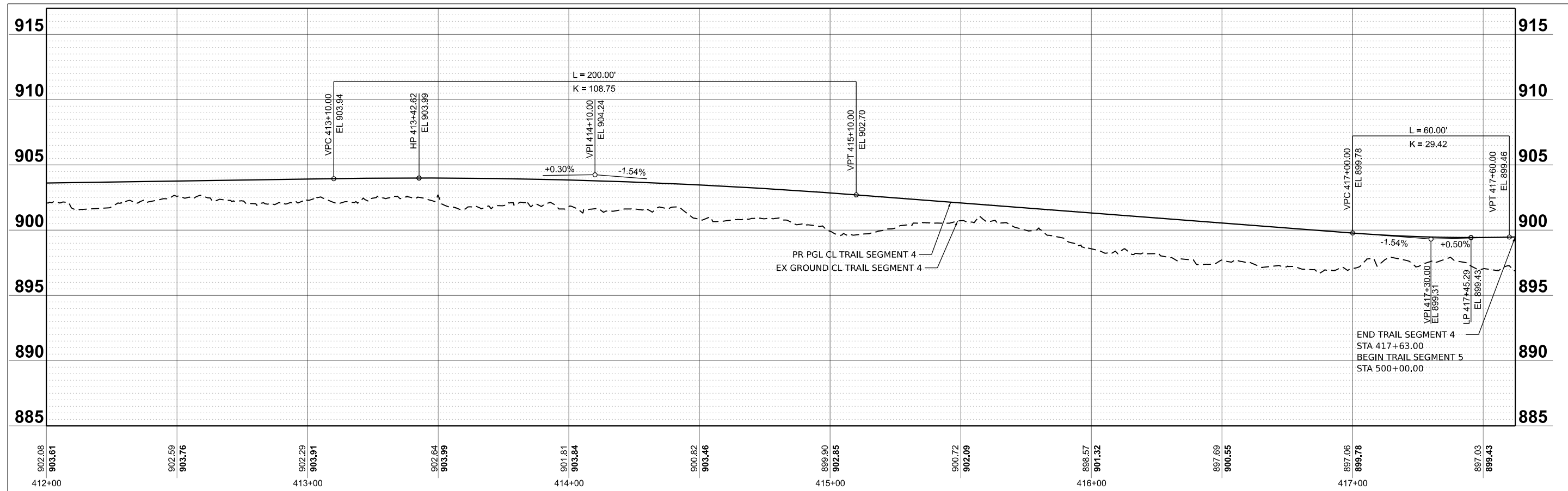
**CITY OF CRYSTAL LAKE
 THREE OAKS RECREATION AREA**

**PROFILE
 TRAIL SEGMENT 4**

SCALE: 1"=20' SHEET 1 OF 2 SHEETS STA. 400+00.00 TO STA. 412+00.00

F.A. RTE.	SECTION	COUNTY	TOTAL SHEETS	SHEET NO.
		MCHENRY	97	30
CONTRACT NO.				
ILLINOIS FED. AID PROJECT				

MODEL: Seg04 - Profile 03 [Sheet]
 FILE NAME: P:\C1260180_Crystal Lake - Three Oaks Path Ph III\Plans\CAD_Sheets\Package 2\20 C1260180_Sht - Plan and Profiles_Seg 2-7.dgn



USER NAME = AAcavedo	DESIGNED -	REVISED -
	DRAWN -	REVISED -
	CHECKED -	REVISED -
PLOT DATE = 3/3/2025	DATE -	REVISED -

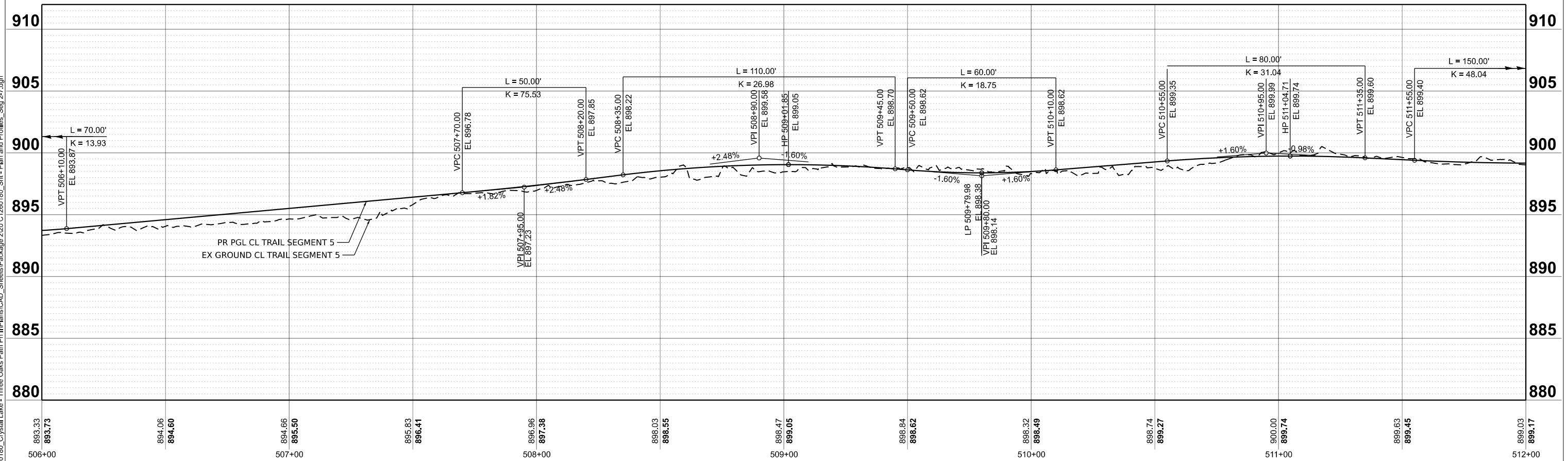
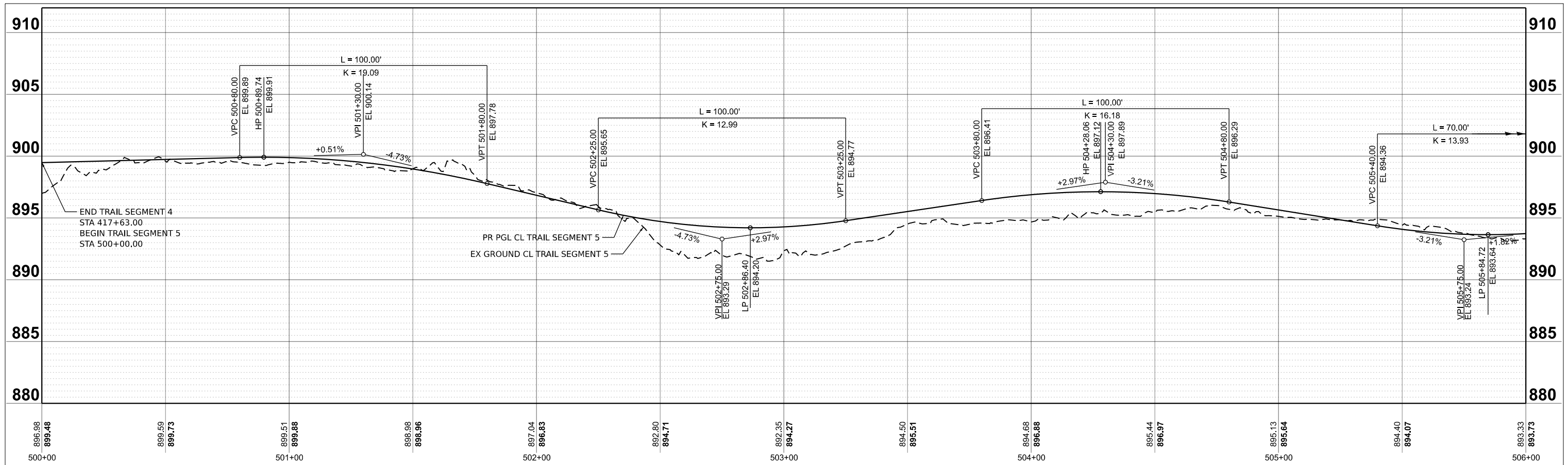
**CITY OF CRYSTAL LAKE
 THREE OAKS RECREATION AREA**

**PROFILE
 TRAIL SEGMENT 4**

SCALE: 1"=20' SHEET 2 OF 2 SHEETS STA. 412+00.00 TO STA. 417+62.25

F.A. RTE.	SECTION	COUNTY	TOTAL SHEETS	SHEET NO.
		MCHENRY	97	31
CONTRACT NO.				
ILLINOIS FED. AID PROJECT				

MODEL: Seg05 - Profile 01 (Sheet)
 FILE NAME: P:\C1260180_Crystal Lake - Three Oaks Path Ph III\Plans\CAD_Sheets\Package 2\20 C1260180_Sht - Plan and Profiles_Seg 2-7.dgn



USER NAME = AAcavedo	DESIGNED -	REVISED -
	DRAWN -	REVISED -
	CHECKED -	REVISED -
PLOT DATE = 3/3/2025	DATE -	REVISED -

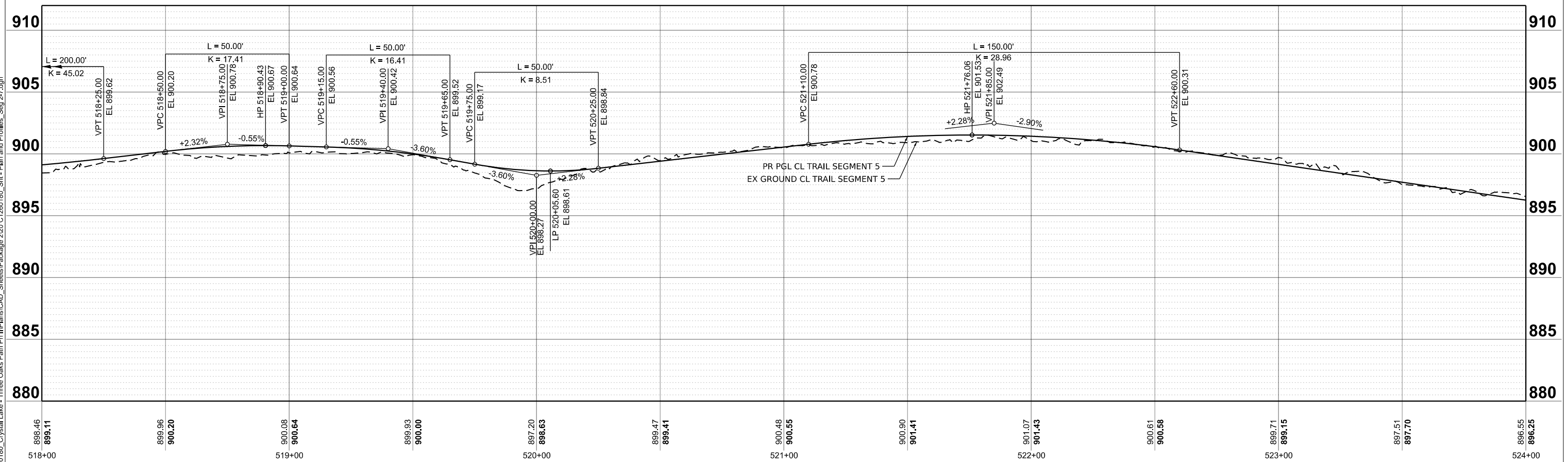
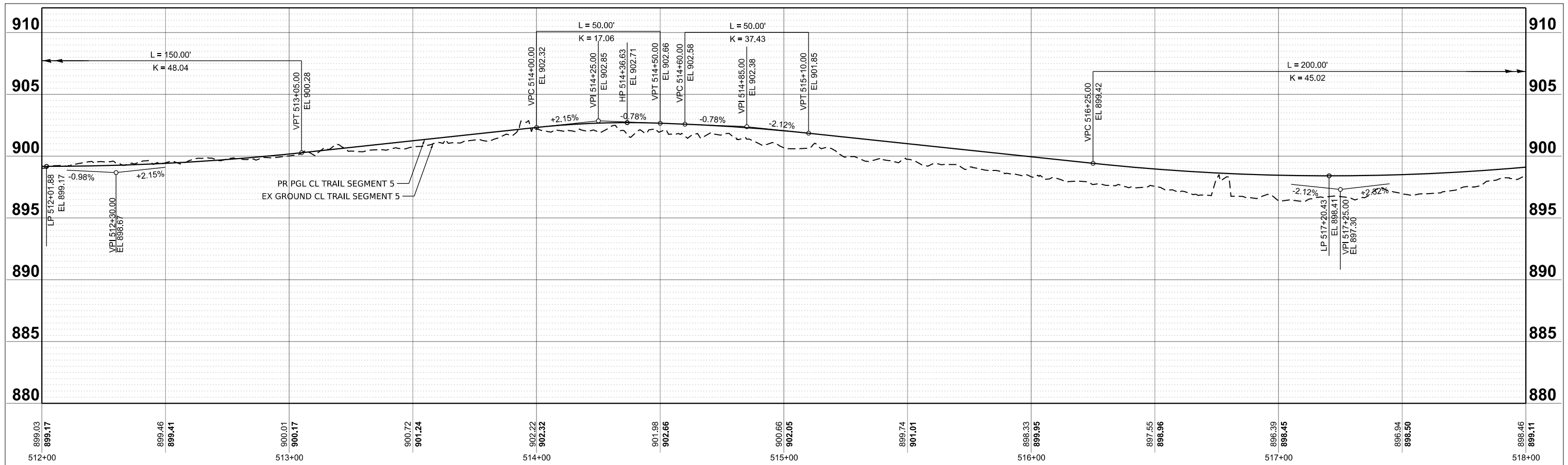
**CITY OF CRYSTAL LAKE
 THREE OAKS RECREATION AREA**

**PROFILE
 TRAIL SEGMENT 5**

SCALE: 1"=20' SHEET 1 OF 3 SHEETS STA. 500+00.00 TO STA. 512+00.00

F.A. RTE.	SECTION	COUNTY	TOTAL SHEETS	SHEET NO.
		MCHENRY	97	32
CONTRACT NO.				
ILLINOIS FED. AID PROJECT				

MODEL: Seg05 - Profile 03 (Sheet)
 FILE NAME: P:\C1260180_Crystal Lake - Three Oaks Path Ph III\Plans\CAD_Sheets\Package 2\20 C1260180_Sht - Plan and Profiles_Seg 2.dgn



USER NAME = AAcavedo	DESIGNED -	REVISED -
	DRAWN -	REVISED -
	CHECKED -	REVISED -
PLOT DATE = 3/3/2025	DATE -	REVISED -

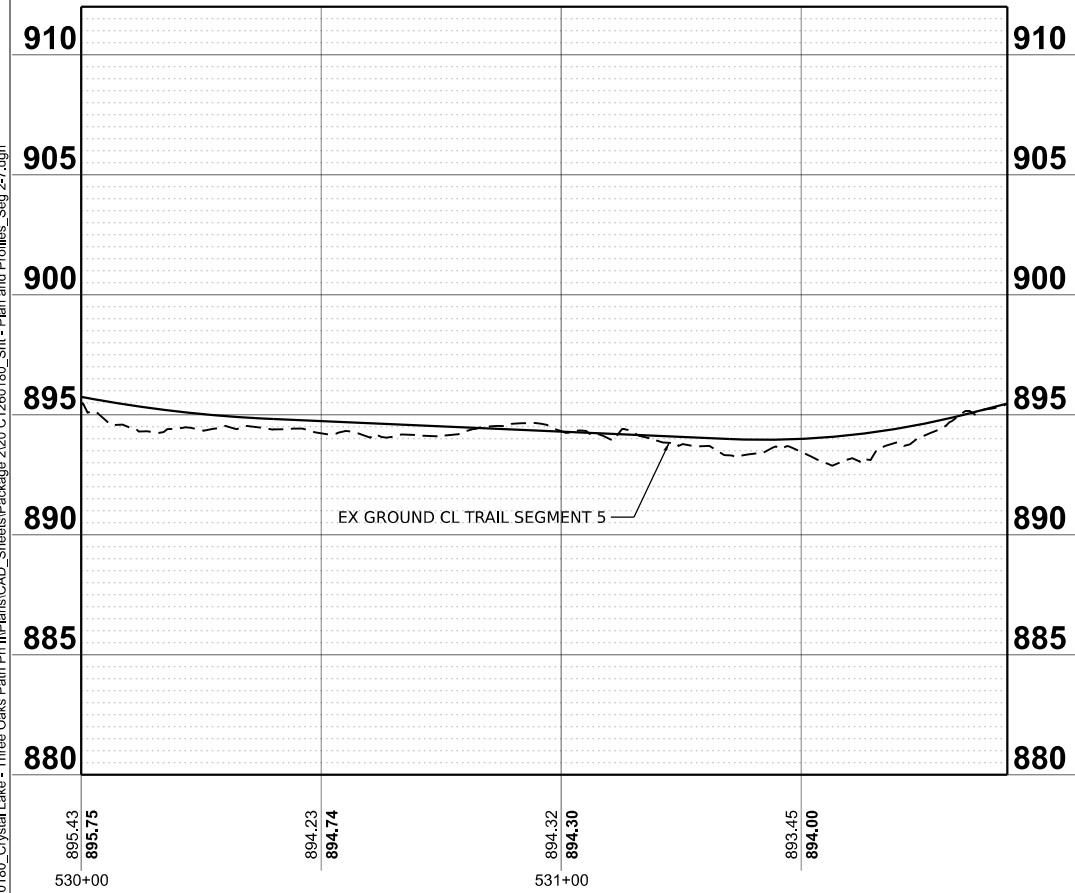
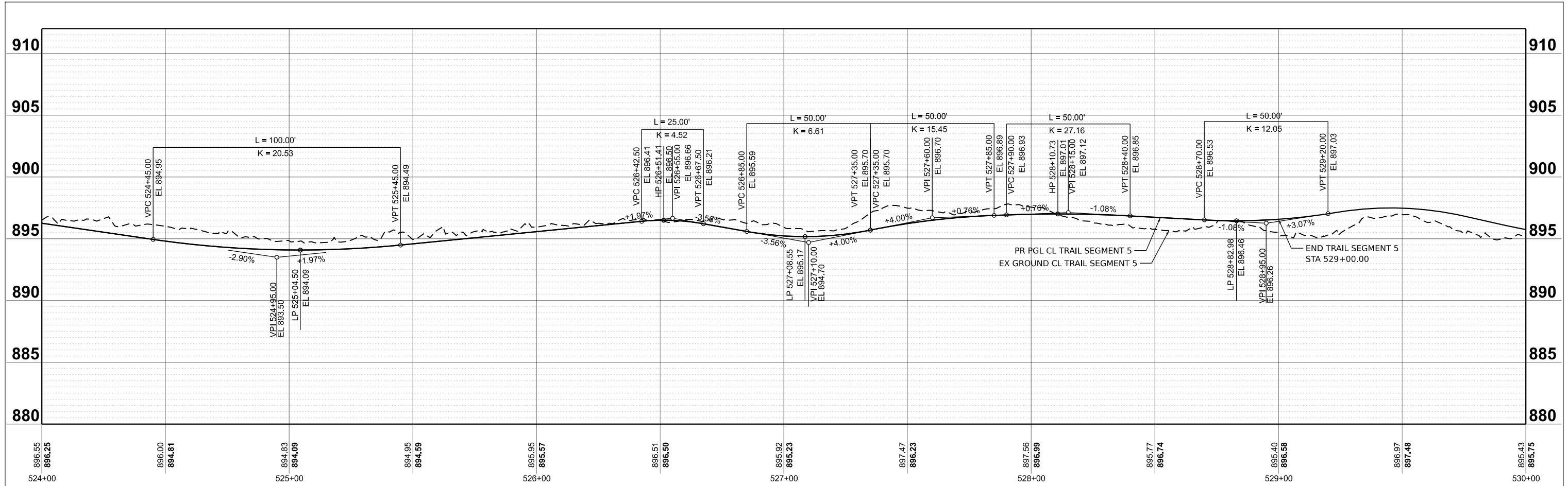
**CITY OF CRYSTAL LAKE
 THREE OAKS RECREATION AREA**

**PROFILE
 TRAIL SEGMENT 5**

SCALE: 1"=20' SHEET 2 OF 3 SHEETS STA. 512+00.00 TO STA. 524+00.00

F.A. RTE.	SECTION	COUNTY	TOTAL SHEETS	SHEET NO.
		MCHENRY	97	33
CONTRACT NO.				
ILLINOIS FED. AID PROJECT				

MODEL: Seg05 - Profile 05 (Sheet)
 FILE NAME: P:\C1260180_Crystal Lake - Three Oaks Path Ph III\Plans\CAD_Sheets\Package 2\20 C1260180_Sht - Plan and Profiles_Seg 2-7.dgn



USER NAME = AAcevedo	DESIGNED -	REVISED -
	DRAWN -	REVISED -
	CHECKED -	REVISED -
PLOT DATE = 3/3/2025	DATE -	REVISED -

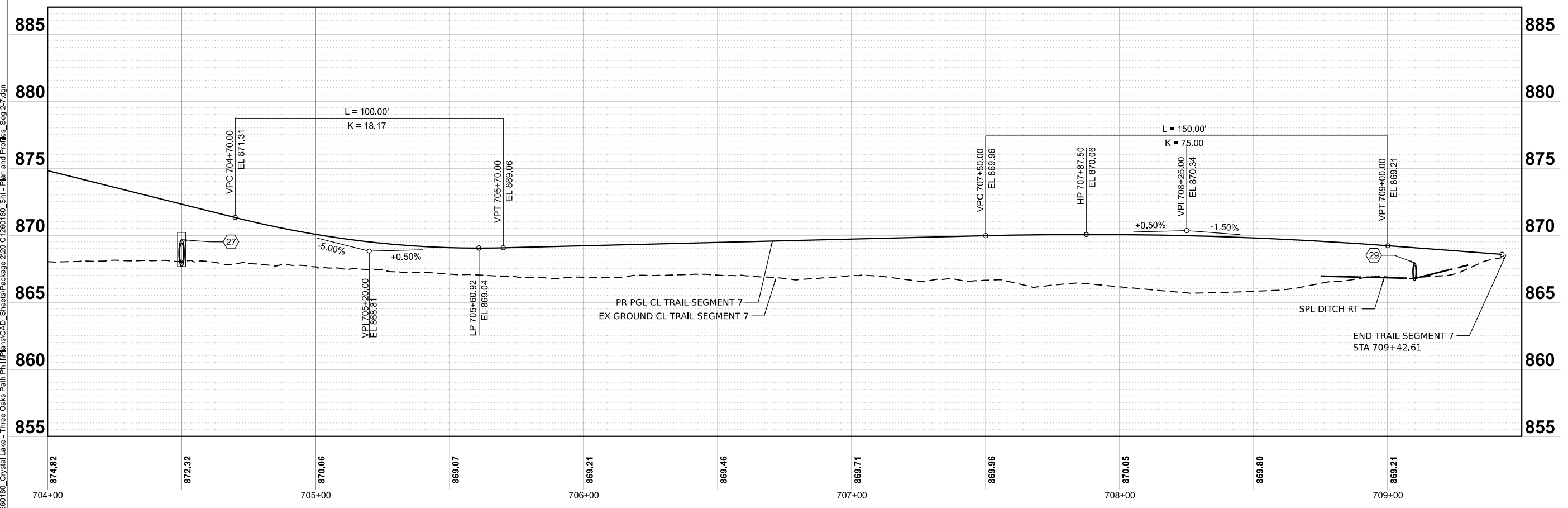
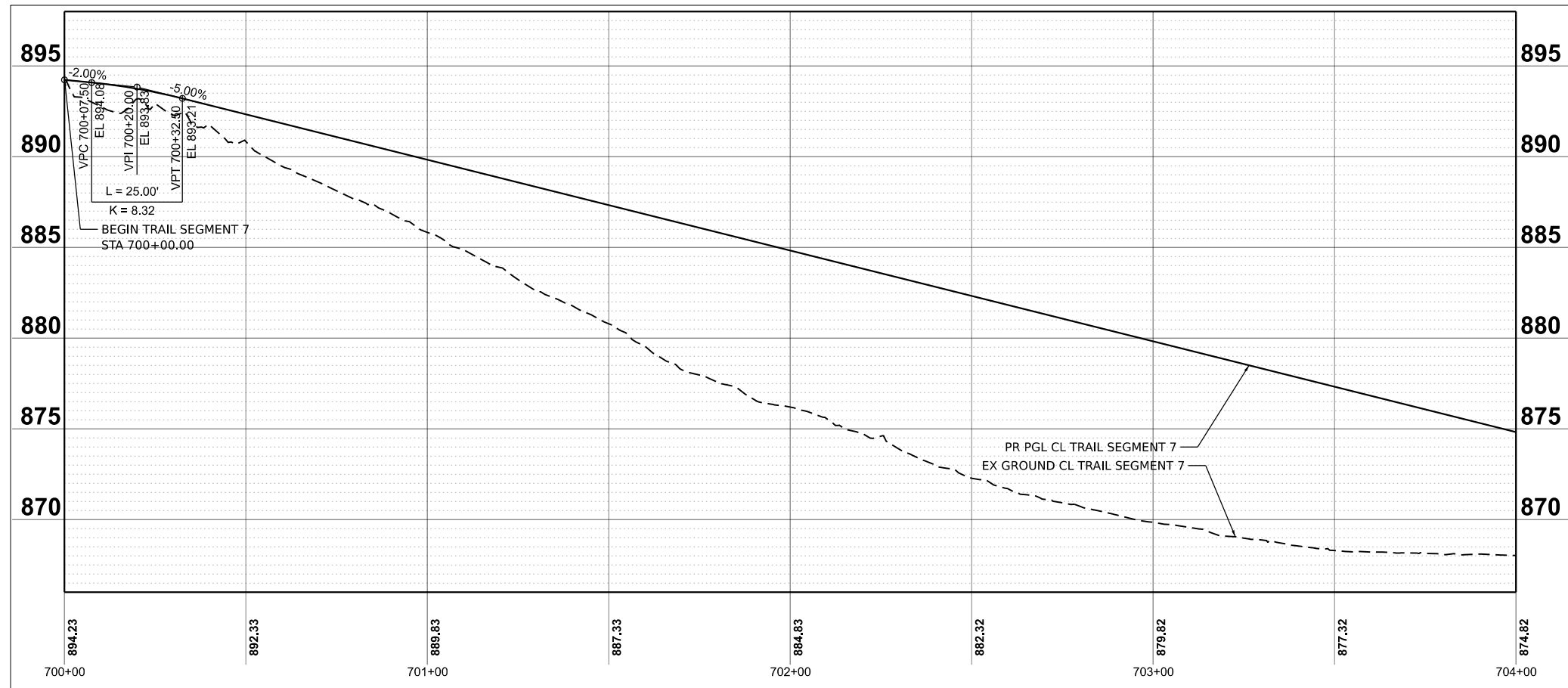
**CITY OF CRYSTAL LAKE
 THREE OAKS RECREATION AREA**

**PROFILE
 TRAIL SEGMENT 5**

SCALE: SHEET 3 OF 3 SHEETS STA. 524+00.00 TO STA. 529+00.00

F.A. RTE.	SECTION	COUNTY	TOTAL SHEETS	SHEET NO.
		MCHENRY	97	34
CONTRACT NO.				
ILLINOIS FED. AID PROJECT				

MODEL: Seg07 - Profile 01 [Sheet]
 FILE NAME: P:\C1260180_Crystal Lake - Three Oaks Path Ph III\Plans\CAD_Sheets\Package 2\20 C1260180_Sht - Plan and Profiles_Seg 2-7.dgn



USER NAME = AAcevedo	DESIGNED -	REVISED -
	DRAWN -	REVISED -
	CHECKED -	REVISED -
PLOT DATE = 3/3/2025	DATE -	REVISED -

**CITY OF CRYSTAL LAKE
 THREE OAKS RECREATION AREA**

**PROFILE
 TRAIL SEGMENT 7**

SCALE: 1"=20' SHEET 1 OF 1 SHEETS STA. 700+00.00 TO STA. 709+50.00

F.A. RTE.	SECTION	COUNTY	TOTAL SHEETS	SHEET NO.
		MCHENRY	97	35
CONTRACT NO.				
ILLINOIS FED. AID PROJECT				

STRUCTURE NUMBER	STATION	OFFSET	RIM ELEV.	INVERT ELEV.	STRUCTURE TYPE
SEGMENT 2					
1	201+80	8.0' LT.	870.34	868.59	INLET TYPE A W/ TYPE 8 GRATE
2	201+80	10.6' RT.	-	868.40	12" METAL FLARED END SECTION
3	203+80	8.0' LT.	869.16	867.13	INLET TYPE A W/ TYPE 8 GRATE
4	203+80	21.4' RT.	-	866.84	15" METAL FLARED END SECTION
5	205+80	8.0' LT.	870.47	868.72	INLET TYPE A W/ TYPE 8 GRATE
6	205+80	13.2' RT.	-	868.50	12" METAL FLARED END SECTION
7	208+03	28.4' LT.	876.47	868.78 N	5' MANHOLE TYPE A W/ TYPE I CLOSED LID
				871.14 S	
8	208+03	15.9' RT.	-	868.34	36" PRECAST REINFORCED CONCRETE FLARED END SECTION
9	213+04	11.5' LT.	-	872.26	12" METAL FLARED END SECTION
10	213+04	13.8' RT.	-	872.01	12" METAL FLARED END SECTION
11	217+22	14.5' LT.	872.58	870.83	INLET TYPE A W/ TYPE 8 GRATE
12	217+22	19.9' RT.	-	870.47	12" METAL FLARED END SECTION
13	220+85	11.2' LT.	872.55	870.80	INLET TYPE A W/ TYPE 8 GRATE
14	220+85	25.9' RT.	-	870.43	12" METAL FLARED END SECTION
15	225+85	9.8' LT.	872.92	870.92	INLET TYPE A W/ TYPE 8 GRATE
16	225+85	23.2' RT.	-	870.59	15" METAL FLARED END SECTION
17	229+58	9.7' LT.	873.16	871.41	INLET TYPE A W/ TYPE 8 GRATE
18	229+58	11.0' RT.	-	871.20	12" METAL FLARED END SECTION
SEGMENT 4					
19	402+50	8.0' LT.	866.96	864.66	INLET TYPE A W/ TYPE 8 GRATE
20	402+50	11.7' RT.	-	864.47	18" METAL FLARED END SECTION
21	403+28	8.0' LT.	867.22	864.93	INLET TYPE A W/ TYPE 8 GRATE
22	403+28	12.8' RT.	-	864.72	18" METAL FLARED END SECTION
23	406+80	22.4' LT.	877.31	875.29	INLET TYPE A W/ TYPE 8 GRATE
24	406+80	12.1' RT.	-	874.94	15" METAL FLARED END SECTION
25	408+97	13.7' LT.	884.80	882.78	INLET TYPE A W/ TYPE 8 GRATE
26	408+97	23.5' RT.	-	882.40	15" METAL FLARED END SECTION
SEGMENT 7					
27	704+50	13.5' LT.	870.20	867.91	INLET TYPE A W/ TYPE 8 GRATE
28	704+50	18.3' RT.	-	867.60	18" METAL FLARED END SECTION
29	709+10	11.8' RT.	-	866.77	12" METAL FLARED END SECTION
30	709+10	16.2' LT.	-	866.21	12" METAL FLARED END SECTION

PIPE NUMBER	UP-DS STRUCTURE NUMBER	STATION	PIPE DESCRIPTION	TRENCH BACKFILL (CU YD)
SEGMENT 2				
1	1-2	201+80	20' - 12" PIPE CULVERT, CL. D, TY-1 @ 1.00%	0.3
2	3-4	203+80	30' - 15" PIPE CULVERT, CL. D, TY-1 @ 1.00%	0.6
3	5-6	205+80	22' - 12" PIPE CULVERT, CL. D, TY-1 @ 1.00%	0.3
4	7-8	208+03	44' - 36" PIPE CULVERT, CL. A, TY-1 @ 1.00%	19.2
5	9-10	213+04	26' - 12" PIPE CULVERT, CL. D, TY-1 @ 1.00%	0.0
6	11-12	217+22	34' - 12" PIPE CULVERT, CL. D, TY-1 @ 1.00%	0.5
7	13-14	220+85	38' - 12" PIPE CULVERT, CL. D, TY-1 @ 1.00%	0.5
8	15-16	225+85	34' - 15" PIPE CULVERT, CL. D, TY-1 @ 1.00%	0.7
9	17-18	229+58	22' - 12" PIPE CULVERT, CL. D, TY-1 @ 1.00%	0.3
SEGMENT 4				
10	19-20	402+50	20' - 18" PIPE CULVERT, CL. D, TY-1 @ 1.00%	0.6
11	21-22	403+28	22' - 18" PIPE CULVERT, CL. D, TY-1 @ 1.00%	0.6
12	23-24	406+80	36' - 15" PIPE CULVERT, CL. D, TY-1 @ 1.00%	0.7
13	25-26	408+97	38' - 15" PIPE CULVERT, CL. D, TY-1 @ 1.00%	0.8
SEGMENT 7				
14	27-28	704+50	32' - 18" PIPE CULVERT, CL. D, TY-1 @ 1.00%	0.9
15	29-30	709+10	28' - 12" PIPE CULVERT, CL. D, TY-1 @ 2.00%	0.0

MODEL: Drainage Tables
 FILE NAME: P:\1260180_Crystal Lake - Three Oaks Path\Drawings\CAD_Sheets\Package 2\30 C1260180_Sht - Plan and Profiles_Seg 2.dgn

USER NAME = AAcevedo	DESIGNED -	REVISED -
PLOT SCALE = \$SCALE\$	DRAWN -	REVISED -
PLOT DATE = 3/3/2025	CHECKED -	REVISED -
	DATE -	REVISED -

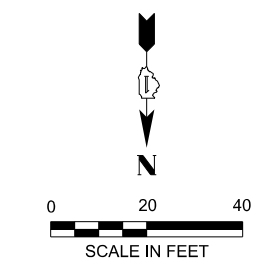
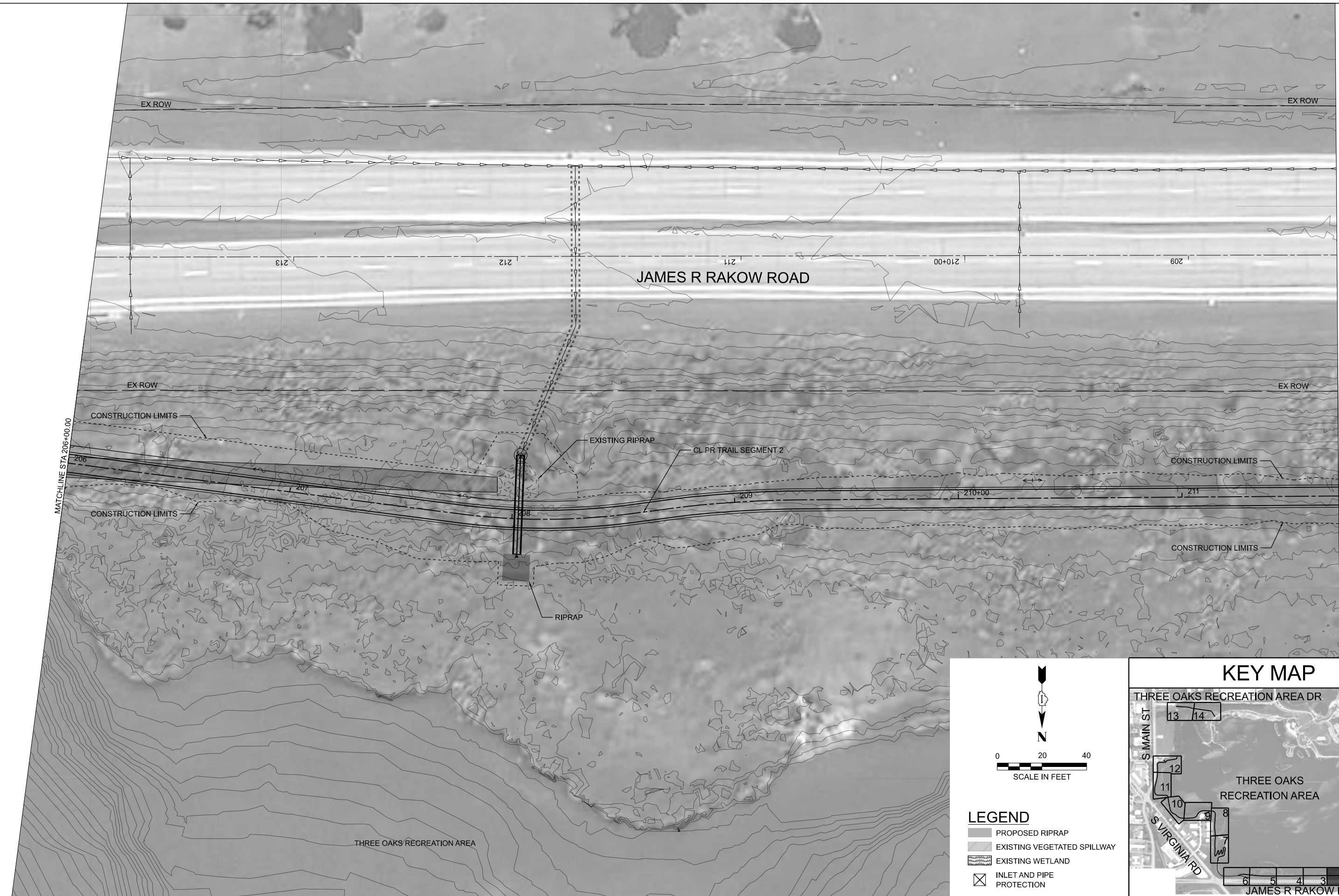
**CITY OF CRYSTAL LAKE
THREE OAKS RECREATION AREA**

DRAINAGE STRUCTURES AND PIPE TABLES

SCALE: 1"=1' SHEET 1 OF 1 SHEETS STA. TO STA.

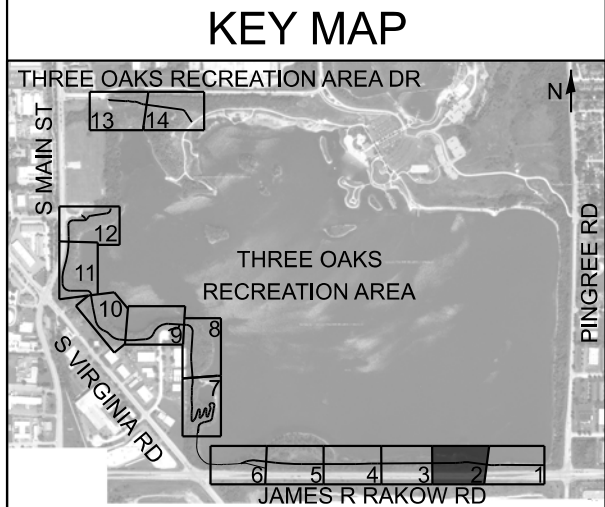
F.A. RTE.	SECTION	COUNTY	TOTAL SHEETS	SHEET NO.
		MCHENREY	97	36
CONTRACT NO.				
		ILLINOIS	FED. AID PROJECT	

MODEL: Trail Seg 03-2 Sheet 2
 FILE NAME: P:\1260180_Crystal Lake - Three Oaks Park\11\11\11\11\CAD_Sheets\Package 2\39 (1260180)_SH - Erosion and Sediment Control Plan_Seg 2-2.dgn



LEGEND

- PROPOSED RIPRAP
- EXISTING VEGETATED SPILLWAY
- EXISTING WETLAND
- INLET AND PIPE PROTECTION



USER NAME = AAcvedo	DESIGNED -	REVISED -
	DRAWN -	REVISED -
PLOT SCALE = \$SCALE\$	CHECKED -	REVISED -
PLOT DATE = 3/3/2025	DATE -	REVISED -

**CITY OF CRYSTAL LAKE
 THREE OAKS RECREATION AREA**

**EROSION AND SEDIMENT CONTROL PLAN
 TRAIL SEGMENT 2**

SCALE: 1"=20' SHEET 2 OF 13 SHEETS STA.206+00.00 TO STA. 211+70.00

F.A. RTE.	SECTION	COUNTY	TOTAL SHEETS	SHEET NO.
		MCHENRY	97	38
CONTRACT NO.				

ILLINOIS FED. AID PROJECT

